



# IONBEAM SERIES

AC INFINITY

SAMSUNG  
HORTICULTURE LED



Plant-centric  
Spectrum

illuminated

EVO



## WELCOME

Thank you for choosing AC Infinity. We are committed to product quality and friendly customer service. If you have any questions or suggestions, please don't hesitate to [contact](#) us. Visit [www.acinfinity.com](http://www.acinfinity.com) and click contact for our contact information.

### EMAIL

[support@acinfinity.com](mailto:support@acinfinity.com)

### WEB

[www.acinfinity.com](http://www.acinfinity.com)

### LOCATION

Los Angeles, CA

## MANUAL CODE NE2501X1

### PRODUCT

IONBEAM S11  
IONBEAM S16  
IONBEAM U2  
IONBEAM U4

### MODEL

AC-NES11  
AC-NES16  
AC-NEU11-2  
AC-NEU11-4

### UPC-A

819137023352  
819137023369  
819137024090  
819137024106

# MANUAL INDEX

Manual Index .....	Page 5
Product Warning .....	Page 6
Key Features .....	Page 7
Product Contents .....	Page 8
Installation .....	Page 9
Powering and Setup.....	Page 14
Controller Mounting .....	Page 15
Starter Guide: Full Spectrum Lighting .....	Page 17
Starter Guide: UV Lighting .....	Page 19
UIS™ Platform .....	Page 21
Connecting to UIS™ .....	Page 22
Programming .....	Page 23
Other Settings .....	Page 28
Other AC Infinity Products .....	Page 29
Warranty .....	Page 30

# PRODUCT WARNING



TO REDUCE THE RISK OF FIRE, ELECTRIC SHOCK, OR INJURY TO PERSONS, OBSERVE THE FOLLOWING:

1. Read all instructions before installing and using this product.
2. Ensure your power source conforms to the electrical requirements of this product.
3. Be careful not to damage or cut the wire insulation (covering) during the installation. Do not permit wires to come in contact with any sharp edges.
4. If you are unfamiliar or have doubts about performing this product's installation, seek the services of a qualified, trained, and licensed professional. Inappropriate installation will void this product's warranty.
5. This product must not be used in potentially hazardous locations such as flammable, explosive, chemical-laden or wet atmospheres.
6. Do not cover power cords with rugs or other fabric materials.
7. Safety precautions should be exercised during the installation, operation, and maintenance of this product.
8. Do not block or tamper with this product in any manner while it is in operation as it may cause electric shock, fire, or damage to this product.
9. Do not depend on the on/off programming as the sole means of shutting power from this product. Unplug the power cord before installing, servicing, or moving this product.
10. Do not operate this product while its cord is damaged, or if it malfunctions, has been dropped, or is damaged in any manner.
11. Do not stare directly at the LED lighting fixture. Doing so can cause damage to your eyes and compromise your eyesight. Use UV eye protection when working with ultraviolet lighting.

# KEY FEATURES

## OPTIMAL LIGHTING\*

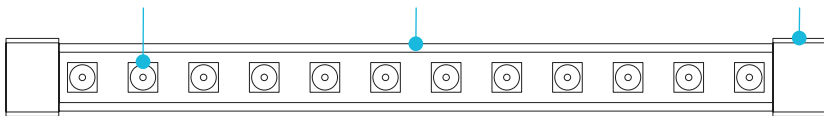
LED light bars with Samsung LM301H EVO diodes deliver coverage for enhanced light quality over entire grow cycles.

## TARGETED LIGHTING†

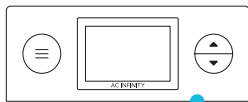
Select models feature UV LEDs that deliver specialized spectrums to trigger specific grow expressions.

## EASY INSTALLATION

Magnetic ends on the LED light bars allow for quick and toolless mounting on any steel surface such as tent frames.



S-series shown



## VERSATILE MOUNTING

Cold-rolled steel bars with matte black powder coating provide sturdy bases for placement on any grow tent.

## SCHEDULE CONTROLLER

Digital controller features SCHEDULE and SUNSET/RISE modes that trigger activation in ten light intensity levels.

## UIS™ COMPATIBILITY

Compatible with select UIS controllers to connect with additional lights and access custom programming.

\*S-series only

†U-series only

SAMSUNG  
HORTICULTURE LED

illuminated

Plant-centric  
Spectrum

EVO

# PRODUCT CONTENTS

## IONBEAM U2 (AC-NEU11-2)



LIGHT BAR  
(SINGLE-CORDED)  
(x1)



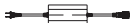
LIGHT BAR  
(DUAL-CORDED)  
(x1)



MOUNTING  
BAR  
(x2)



SCHEDULE  
CONTROLLER  
(x1)



EC POWER  
ADAPTER  
(x1)



BAR EXTENSION  
CORD (M-F)  
(x3)



UIS EXTENSION  
CORD (M-M)  
(x1)



WOOD SCREWS  
(WALL MOUNT)  
(x7)



CONTROLLER  
PLATE BOLTS  
(x2)



HEX  
NUTS  
(x3)



HOOK AND LOOP  
CABLE TIES  
(x4)



WIRE  
MOUNT  
(x4)

---

## S-SERIES (AC-NES11, AC-NES16) & IONBEAM U4 (AC-NEU11-4)



LIGHT BAR\*  
(SINGLE-CORDED)  
(x1)



LIGHT BAR\*  
(DUAL-CORDED)  
(x3)



MOUNTING  
BAR  
(x4)



SCHEDULE  
CONTROLLER  
(x1)



EC POWER  
ADAPTER  
(x1)



BAR EXTENSION  
CORD (M-F)  
(x9)



UIS EXTENSION  
CORD (M-M)  
(x1)



WOOD SCREWS  
(WALL MOUNT)  
(x11)



CONTROLLER  
PLATE BOLTS  
(x2)



HEX  
NUTS  
(x3)



HOOK AND LOOP  
CABLE TIES  
(x4)



WIRE  
MOUNT  
(x8)

\*S-series shown



# INSTALLATION

## LIGHT BAR CHAIN ASSEMBLY

### STEP 1

Connect the single-corded light bar's female port to the dual-corded light bar's male connector.

### STEP 2

Connect the EC power adapter's male connector to the other end of the dual-corded light bar.

### STEP 3

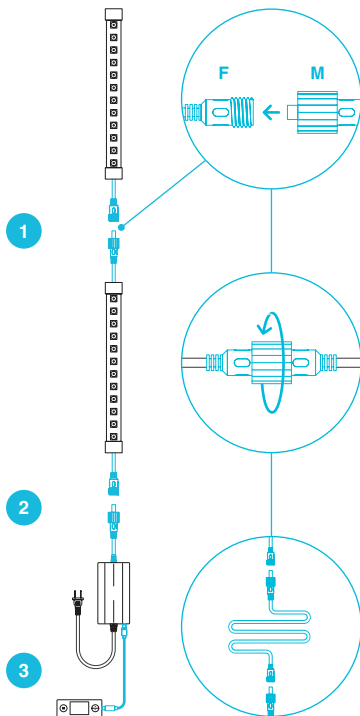
Use the UIS extension cord to connect the power adapter to the schedule controller.



Plug the UIS connector with the gasket end into your power adapter. The gasket is specially designed to protect against liquids and dust.

### EXTENDING THE CHAIN

You may connect the included bar extension cord in between any link in this light bar chain to lengthen it. Secure all connections using the twist-on pieces.



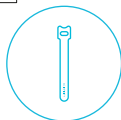
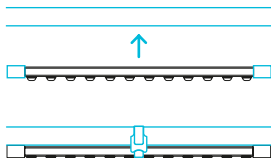
# INSTALLATION

## LIGHT BAR MOUNTING

### POLE MOUNTING

You may magnetically mount your light bars directly on your grow tent steel pole.

You may also use the included hook and loop cable ties around your light bars and mounting bars to adjust the lighting angle and for extra security.



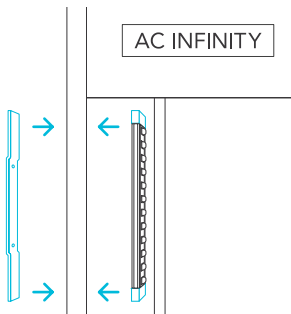
### CANVAS MOUNTING

You may magnetically mount your light bars to the wall or ceiling of your grow tent.

Set the included mounting bars on the outer side of your tent. Set your light bars at the exact spots on the inner side.

Once mounted, you can move the light bar and mounting bar connection along your grow tent surface as needed.

Test that the magnetic connection through the canvas is secure before use.

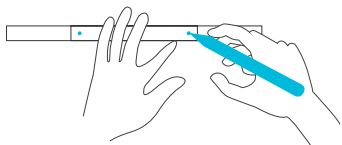


# INSTALLATION

## LIGHT BAR MOUNTING

### STEP 1 — WALL MOUNTING

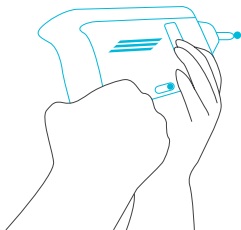
Make sure your mounting area is free from obstruction. Use a mounting bar to mark your drilling holes with the logo facing the wall.



---

### STEP 2 — WALL MOUNTING

Drill holes into the marked locations.



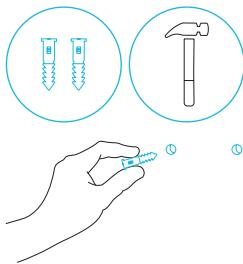
# INSTALLATION

## LIGHT BAR MOUNTING

### STEP 3 — WALL MOUNTING

If you are mounting onto anything other than a wood support or stud, insert the included four wall anchors into the drilled mounting holes.

You may need to use a hammer to secure them through the holes.



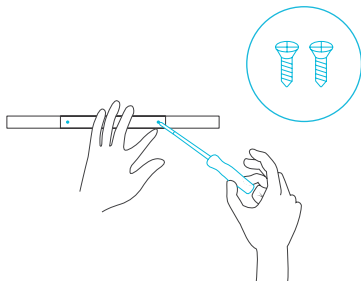
---

### STEP 4 — WALL MOUNTING

Align the mounting bar holes with the wall anchors, making sure the logo faces the wall.

Screw or drill in the wood screws to secure the mounting bar.

Repeat steps 1-4 as needed.



# INSTALLATION

## LIGHT BAR MOUNTING

### STEP 5 — WALL MOUNTING

Set the light bar magnet ends onto the mounting bars.

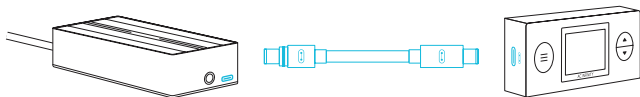
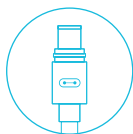


# POWERING AND SETUP

## STEP 1

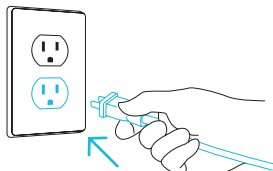
Use the included UIS M-M extension cord to connect the fan's EC motor box to one of the controller's ports.

Plug the UIS connector with the gasket end into your power adapter. The gasket is specially designed to protect against liquids and dust.



## STEP 2

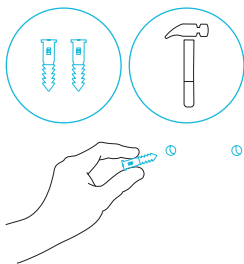
Plug the power adapter into a wall outlet.



# CONTROLLER MOUNTING

## STEP 1 — WALL MOUNTING

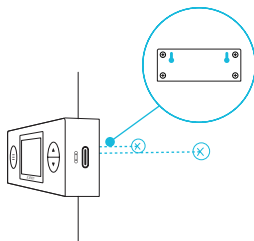
Locate a spot free of obstruction and secure the anchor into your wall. Twist the wood screw into the anchors.



---

## STEP 2 — WALL MOUNTING

Hang the controller by the screw using the holes on the backside.

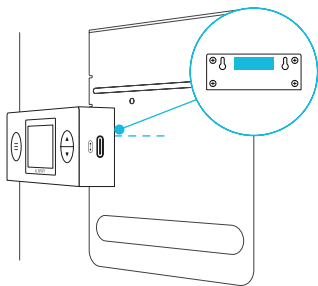


# CONTROLLER MOUNTING

## MAGNETIC MOUNTING

The controller will magnetically mount onto the CLOUDLAB series advance grow tent's controller mounting plate or any steel surface.

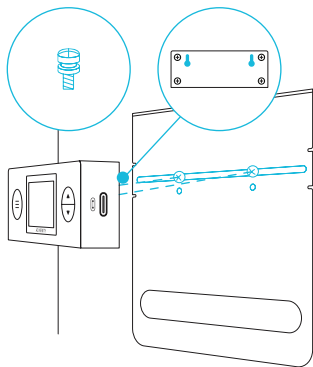
The magnet is located under the controller's label.



## PLATE MOUNTING\*

Screw the controller plate bolts into the slot or mounting holes at the upper half of the plate.

Hang the controller by the bolts using the holes on the backside.



\*Controller plate not included



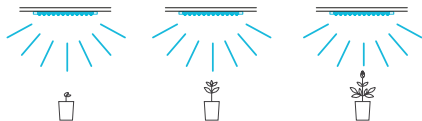
# STARTER GUIDE

## FULL SPECTRUM LIGHTING (AC-NES11, AC-NES16)

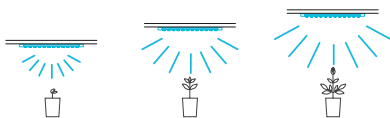
### GROW LIGHT PLACEMENT

The charts below offer suggested mounting heights and light intensities for each stage in the growing process of your preferred method. These factors will vary based on the plant you are growing. In dynamic placement, "height" refers to distance from the canopy (tip of the plant).

<b>STATIC PLACEMENT</b>	Seedling Stage	Vegetative Stage	Flowering Stage
Height	Peak	Peak	Peak
Intensity	100%	100%	100%



<b>DYNAMIC PLACEMENT</b>	Seedling Stage	Vegetative Stage	Flowering Stage
Height	1.5 in.	1.5 in.	1.5 in.
Intensity	40%	80%	100%



\*Also recommended for plant propagation.

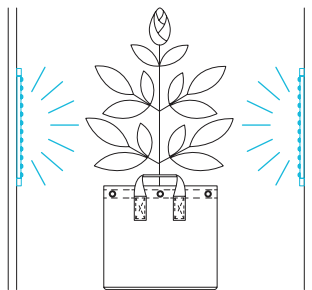
# STARTER GUIDE

## FULL SPECTRUM LIGHTING (AC-NES11, AC-NES16)

### SUPPLEMENTAL LIGHTING

To use your light bars as support lighting, you may mount them on magnetic surfaces like grow tent poles. Mounting them above your plant's canopy will provide light coverage in dim corners of your grow space. Mounting them by your plant's inter-canopy or under-canopy region will improve the growth of its underdeveloped areas.

Distance	Intensity
1 in.	10%
2 in.	20-30%
3 in.	40-50%
4 in.	60-70%
5 in.	80-90%
6 in.	100%












# STARTER GUIDE

## UV LIGHTING (AC-NEU11-2, AC-NEU11-4)

Use of UV lighting is recommended only in the flowering stage to enhance fruit and flower development. This lighting can be left on for a few hours a day or the entire daily light cycle.

These factors will vary based on the plant you are growing. Height refers to the minimum recommended distance from the canopy (tip of the plant) to the light.

COVERAGE	Height	Intensity	Models
 2' x 2' 	1 FT.	Level 5  50% Brightness	IONBEAM U2 (AC-NEU11-2)
 2' x 4' 	1 FT.	Level 10  100% Brightness	IONBEAM U2 (AC-NEU11-2)
 3' x 3' 	1 FT.	Level 10  100% Brightness	IONBEAM U2 (AC-NEU11-2)

# STARTER GUIDE

## UV LIGHTING (AC-NEU11-2, AC-NEU11-4)

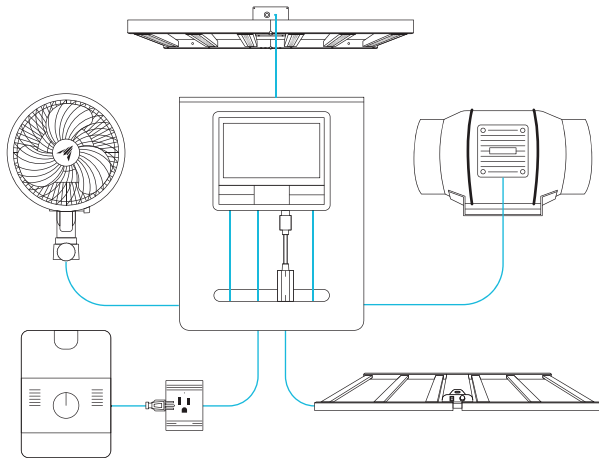
COVERAGE	Height	Intensity	Models
<p>4' x 4'</p> 	1 FT.	<p>Level 10</p>  <p>100% Brightness</p>	IONBEAM U4 (AC-NEU11-4)
<p>5' x 5'</p> 	1 FT.	<p>Level 10</p>  <p>100% Brightness</p>	IONBEAM U4 (AC-NEU11-4)

# UIS™ PLATFORM

The UIS™ platform enables you to connect a single central controller with several grow devices simultaneously. By creating this fully integrated system, you can power and program all your devices together or separately for optimized grow tent management.

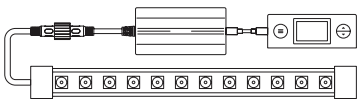
Your grow system can be regulated using your controller hub or remotely on the AC Infinity app (paired with compatible controllers), where you will have access to automation programming and climate data.

You can also connect your favorite grow light and outlet device to integrate them into the UIS platform using our RJ11/12 adapter and control plug module.



**Central controller and grow devices will be sold separately and may still be in development at the time of your purchase of this product.**

# CONNECTING TO UIS™

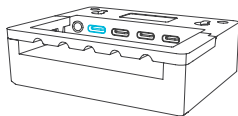
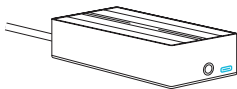
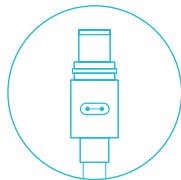


IONBEAM LED grow lights can connect with select smart controllers as part of an integrated system using the included UIS extension cord.

## CONNECTING TO UIS CONTROLLERS

Use the included UIS M-M extension cord to connect the EC power adapter to your selected UIS controller.

Plug the UIS connector with the gasket end into your power adapter. The gasket is specially designed to protect against liquids and dust.



CONTROLLER 69 PRO (CTR69P) shown

# PROGRAMMING

## 1. MODE BUTTON

Cycles through each of the controller modes: OFF, ON, SCHEDULE, SUNSET/RISE, and CLOCK. Holding this button will lock the controller; pressing this button afterwards will turn off the display.

## 2. UP/DOWN BUTTON

Adjusts the setting of your current mode.

## 3. CURRENT TIME

Displays the current time. The internal battery sustains the clock so it does not default to 00:00 if power is cut off.



## 4. USER SETTING

Displays the light bars' intensity level as well as countdown timers of the SCHEDULE modes.

## 5. CONTROLLER MODE

Displays the controller's current mode. Pressing the mode button cycles through the available modes.

## 6. LOCK ICON

Displays the controller lock status of the controller.

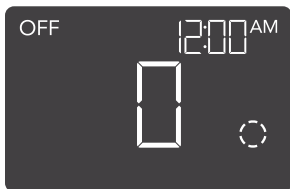
# PROGRAMMING

## CONTROLLER MODES

Pressing the mode button will cycle through the controller's available programming modes and settings: OFF, ON, SCHEDULE, SUNSET/RISE, and CLOCK.

### OFF MODE

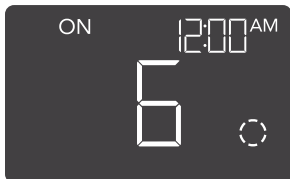
Your light bars will not activate while in this mode. The intensity level set here establishes the minimum intensity level in the SCHEDULE mode. When they are triggered to turn off, they will instead shine at the level set here.



---

### ON MODE

Your light bars will activate to the intensity level set here. The ON mode also serves as the maximum intensity level the SCHEDULE mode will shine in.





# PROGRAMMING

## SCHEDULE MODE (ON & OFF)

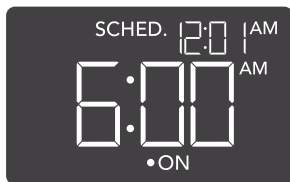
Sets an on clock-time and an off clock-time schedule for your light bars to follow daily.

Press the up or down button to first set up an on clock-time to turn your light bars on, then press the mode button to set an off clock-time to turn your light bars off. Make sure to set the current clock time under settings.

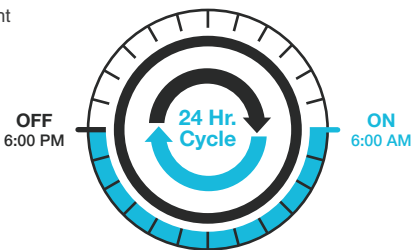
When your light bars turn on, they will run at your set maximum level. When your light bars turn off, they will run at your set minimum level.

The countdown will begin if no buttons are pressed for 5 seconds. Leaving the SCHEDULE mode while the countdown is running will pause it until you return to this mode.

Resetting the off clock-time will result in your light bars staying on until you actively turn them off.



Your light bars will shine at your set OFF mode level while they are off, and at your set ON mode level while they are on.



# PROGRAMMING

## SUNSET/RISE MODE

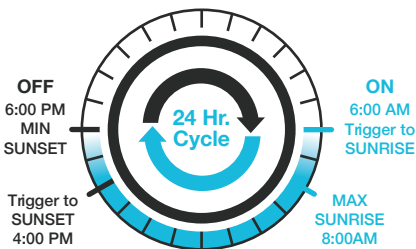
Sets a sunrise and sunset time for your light bars to brighten and dim, respectively. This setting only applies to SCHEDULE mode.

Press the up or down button to set a duration between 0:00 – 6:00 hours for your light bars to brighten and dim. For this setting to activate, you must return to SCHEDULE mode.

When your light bars are triggered to turn on, they will begin brightening up to your maximum level. They will then begin dimming down to your minimum level before they are triggered to turn off.

In this example, your light bars are set to turn on at 6:00 AM and turn off at 6:00 PM. The SUNSET/RISE setting is set to 2:00 hours. At 6:00 AM, your light bars will begin gradually brightening until they reach your maximum level at 8:00 AM. Your light bars will then begin dimming at 4:00 PM until they reach your minimum level at 6:00 PM.

You may deactivate this mode by setting the SUNSET/RISE timer to 0:00.



Your light bars will shine at your set OFF mode level while they are off, and at your set ON mode level while they are on.

# PROGRAMMING

## CLOCK MODE

Adjusts the current clock time. Use the up and down buttons to adjust the time. Once you cycle through 12:00 each time, the units will automatically change to AM or PM.

The clock time is located at the center of the display and the upper right hand corner.



---

## TOGGLING THE DISPLAY

Lock the controller by holding the mode button.

Press the mode button to turn the display off. Pressing the mode button again will turn the display back on.

Programs will still run in the background while the LCD screen is off.



HOLD + 



PRESS + 

# OTHER SETTINGS

## FACTORY RESET

Holding the mode and up/down buttons together for 5 seconds will reset your controller and restore factory settings. This will clear all user set parameters of each controller mode and setting.

HOLD +



---

## RESET TO OFF/DEFAULT

Holding the up and down buttons together for 2 seconds will reset the value of your current mode to its default setting. In SCHEDULE mode, pressing the up or down button after resetting will return it to its previous value.

HOLD +



---

## CONTROLLER LOCK

Holding the mode button will lock the controller in your current mode. While your controller is locked, no parameters may be adjusted nor will you be able to switch modes. Holding the mode button again will unlock the controller.

HOLD +



---

## HIDE SCREEN

Lock the controller so no settings can be adjusted. See above. Then press the mode button to turn the display off. Pressing the mode button again will turn the display back on. Programs will still run in the background while the LCD screen is off.

PRESS +

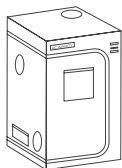


# AC INFINITY PRODUCTS

## Advance Grow Tents

The CLOUDLAB series is a line of grow tents designed to create ideal growing conditions and facilitate indoor plant cultivation year-round. Features 2000D thick oxford canvas lined with inner diamond patterned mylar that maximizes grow light luminosity, and a reinforced frame with 150 lb. weight capacity. Includes a mounting plate to install your AC Infinity controller onto.

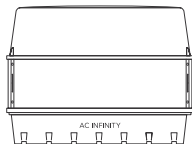
---



## Humidity Dome

The humidity dome is designed to maintain moisture levels to create the ideal environment for seed germination. Each kit includes a base tray and seedling tray with a dome that is built with adjustable vents to control humidity levels. Height extender also included to provide a higher ceiling for propagation applications.

---



## Seedling Mats

The SUNCORE series is a line of seedling mat designed to improve germination success and accelerate your seeds' growth process by emitting steady heat. Each mat is lined with an innovative far-infrared film that provides even heating distribution.



Discover the latest innovations in environmental controls at [acinfinity.com](http://acinfinity.com)

# WARRANTY

This warranty program is our commitment to you, the product sold by AC Infinity will be free from defects in manufacturing for a period of two years from the date of purchase. Commercial grow lights sold by AC Infinity receive a five year warranty period. If a product is found to have a defect in material or workmanship, we will take the appropriate actions defined in this warranty to resolve any issues.

The warranty program applies to any order, purchase, receipt, or use of any products sold by AC Infinity or our authorized dealerships. The program covers products that have become defective, malfunctioned, or expressively if the product becomes unusable. The warranty program goes into effect on the date of purchase. The program will expire two years from the date of purchase (five years from the date of purchase of commercial grow lights). If your product becomes defective during that period, AC Infinity will replace your product with a new one or issue you a full refund.

The warranty program does not cover abuse or misuse. This includes physical damage, submersion of the product in water, incorrect installation such as wrong voltage input, and misuse for any reason other than intended purposes. AC Infinity is not responsible for consequential loss or incidental damages of any nature caused by the product. We will not warrant damage from normal wear such as scratches and dings.

Contact our dealers department at [dealers@acinfinity.com](mailto:dealers@acinfinity.com) or (626) 838-4656 for more information about our dealers and distributors program. Contact our customer service department at [support@acinfinity.com](mailto:support@acinfinity.com) or (626) 923-6399 for product and warranty assistance. Our business hours are Monday through Friday, 9:00 am to 5:00 pm PST.



**If you have any issues with this product, contact us and we'll happily resolve your problem or issue a full refund!**

**COPYRIGHT © 2025 AC INFINITY INC. ALL RIGHTS RESERVED**

No part of the materials including graphics or logos available in this booklet may be copied, photocopied, reproduced, translated or reduced to any electronic medium or machine readable form, in whole or in part, without specific permission from AC Infinity Inc.

Samsung is a trademark of SAMSUNG ELECTRONICS CO., LTD.











[www.acinfinity.com](http://www.acinfinity.com)